

WINCH HANDLE HOLDER

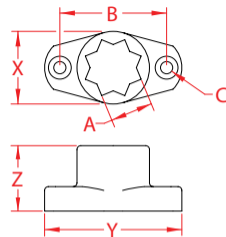
316 STAINLESS STEEL



Import



Precision
Cast



ITEM	A	B	C	FASTENER	X (height)	Y (length)	Z (width)	WT (lb)	PACKAGING TYPE	EACH (qty)	INNER (qty)	CARTON (qty)	UPC
S3520-0001	0.71"	1.75"	0.21"	#10 Screws	1.21"	2.25"	1.05"	0.18	POLYBAG	1	1	100	791506056379

NOTE:

**ELIMINATE THOSE BULKY WINCH HANDLE POCKETS IN YOUR COCKPIT AND REPLACE THEM WITH THE "WINCH HANDLE HOLDER".
FEATURING A SIMPLE TWO FASTENER INSTALLATION, THIS WINCH HANDLE HOLDER CAN BE EASILY PLACED WHERE IT WILL BE MOST USEFUL.
ALL DIMENSIONS ARE NOMINAL (+/- 3%) AND ARE SUBJECT TO CHANGE WITHOUT NOTICE.**